

Table of Contents

IRONMONGERY PLUS

Architectural Ironmongery Specialists

0131 605 0141

Rack & Pinion Door Closers	2
DC135 - Rack & Pinion Door Closer	4
DC140 - Rack & Pinion Door Closer	5
DC300T - Heavy Duty Rack & Pinion Door Closer	6
DC200 -	7
DC300 - Rack & Pinion Door Closer	8
DC340 - Rack & Pinion Door Closer	9
DC347 - Heavy Duty Rack & Pinion Door Closer	11
ACCRP - Accessories	12
Cam-Motion® Door Closers	13
DC500 - Cam-Motion® Door Closer	14
DC700 - Cam-Motion® Door Closer	15
DC840 - Concealed Cam-Motion® Door Closer	16
DC860 - Concealed Cam-Motion® Door Closer	17
DC500 with G460 - Electro-mechanical Door Closer	18
Electro-mechanical Door Closers	19
DC340TE - Electro-mechanical Door Closer	20
DC300G-HF - Electro-mechanical Door Closer	21
DC640 A&T - Electro-mechanical Door Closer	22
DC500 with G460 - Electro-mechanical Door Closer	23
DC500 with G461 - Electro-mechanical Door Closer	24
DC500 with G462 - Electro-mechanical Door Closer	25
DC500 with G464 - Electro-mechanical Door Closer	26
DC700 with G460 - Electro-mechanical Door Closer	27
DC700 with G461 - Electro-mechanical Door Closer	28
DC700 with G462 - Electro-mechanical Door Closer	29
DC700 with G464 - Electro-mechanical Door Closer	30
DC840 with G880 - Concealed Electro-mechanical Door Closer	31
DC860 with G880 - Concealed Electro-mechanical Door Closer	32
DC860 with G881 - Concealed Electro-mechanical Door Closer	33
DC860 with G882 - Concealed Electro-mechanical Door Closer	34
DC860 with G884 - Concealed Electro-mechanical Door Closer	35
Specialist Door Closers	36
DA4405F - DA4405F	38
DA4410F - DA4410F	39
Floor Springs	40
DC450A - Floor Springs	41
DC475 - Floor Springs	42
DC477 - Floor Springs	43
Door Automatics	44
DA4405F - DA4405F	46
DA4410F - DA4410F	47

Door Controls

ASSA ABLOY

ASSA ABLOY boasts an unparalleled record in designing and producing top quality door closers to meet every need. With over 100 years of knowledge, experience and innovation, ASSA ABLOY Door Closers are the fully compliant choice for the professional specifier and installer.





Rack & Pinion Door Closers

ASSA ABLOY

ASSA ABLOY's high efficiency Rack & Pinion technology provides easy access solutions using link arms.



Rack & Pinion Door Closers

DC135

Rack & Pinion Door Closer

Application:

ASSA ABLOY Door closers are ideal for almost any structural conditions, whether they are used in public, residential or commercial buildings or on light or heavy doors.



Specification:

ASSA ABLOY Door Closer DC135 featuring Rack & Pinion technology with guide rail in compliance with EN 1154

- Closing force EN size 3, for doors up to 950 mm wide
- Closing speed, latching speed and backcheck continuously adjustable
- Suitable for fire and smoke protection doors
- CE approved
- Suitable for left and right handed doors

Standards:

- Certified in compliance with EN 1154, size 2-4
- CE Marked
- Suitable for fire and smoke protection doors
- Meets BS8300

Finish:

- Silver EV1/Silver EV1
- White, similar to RAL9016
- Brown, similar to RAL8014
- Black, similar to RAL9005
- Customized finishes available on request

Variants:

Code	Description
DC135A	DC135A R&P DOOR CLOSER SIZE 3 WITH GUIDE RAIL SILVER

Rack & Pinion Door Closers

DC140

Rack & Pinion Door Closer

Application:

ASSA ABLOY Door Closers are ideal for almost any structural conditions, whether they are used in public, residential or commercial buildings or on light or heavy doors.



Specification:

- Door closer with CAM-Motion Technology and height-adjustable guide rail G195 or standard guide rail G193
- Fulfills barrier-free building requirements (DDA/CEN TR 15894)
- Certified compliance with EN 1154, size 1-4
- Suitable for fire and smoke protection doors
- For single action doors up to 1100 mm wide
- Can be used in four installation types: hinge and non-hinge sides in standard and frame installation
- Can be used with integrated concealed mounting plate, suitable for fire and smoke protection doors
- Can be used for left and right-handed doors
- Axis continuously height adjustable up to 14 mm
- Closing speed, latching speed and backcheck adjustable via front facing regulating valves
- Thermodynamic valves for consistent performance
- Variable adjustable closing force
- Opening angle up to 170°
- Effective backcheck and latching speed range adjustable
- Large range of applications

Standards:

- Certified in compliance with EN 1154, size 2-4
- CE Marked
- Suitable for fire and smoke protection doors
- Meets BS8300

Finish:

- Silver EV1/Silver EV
- White, similar to RAL9016
- Brown, similar to RAL8014
- Black, similar to RAL9005
- Customized finishes available on request

Variants:

Code	Description
DC140A	DC140A DOOR CLOSER SIZE 2/3/4/5 TEMPLATE WITH ARM & PA BRACKET SILVER

Rack & Pinion Door Closers

DC300T

Heavy Duty Rack & Pinion Door Closer

Application:

Tandem door closer with rack and pinion technology and link arm

Specification:

- Rack and pinion closer with link arm L190
- Two door closers are interlinked for extra wide and heavy doors
- For single action doors up to 1,800 mm wide
- Tandem mounting plate A121 generally required
- Closing speed, latching speed and backcheck adjustable via front facing regulating valves
- Can be used for left and right-handed doors
- Thermodynamic valves for consistent performance
- Axis height-adjustable up to 14 mm
- Double closing torque of DC300, EN size > 7
- Variable adjustable closing force
- Opening angle up to 180°
- Large range of applications

Finish:

- Silver EV1

Variants:

Code	Description
DC300A/TANDEM-1	DC300A/TANDEM-1

Standards:

- Certified in compliance with EN 1154
- Suitable for fire and smoke protection doors

Rack & Pinion Door Closers

DC200

ASSA ABLOY

Application:

ASSA ABLOY Door Closers are ideal for almost any structural conditions, whether they are used in public, residential or commercial buildings or on light or heavy doors.

Specification:

- Rack and pinion closer with link arm L190
- Certified in compliance with EN 1154, size 2-4
- Can be used for left and right-handed doors
- Rack and pinion closer with link arm L190
- Can be used with integrated concealed mounting plate, suitable for fire and smoke protection doors
- Axis height - adjustable up to 14mm
- Closing speed, latching speed and backcheck adjustable via front facing regulating valves
- Thermodynamic valves for consistent performance
- Variable adjustable closing force
- Opening angle up to 180°
- Effective backcheck and latching speed range adjustable
- Large range of applications



Standards:

- Certified in compliance with EN 1154, size 2-4
- CE Marked
- Suitable for fire and smoke protection doors
- Meets BS8300

Finish:

- Silver EV1
- Stainless Steel
- White, similar to RAL9016
- Brown, similar to RAL8014
- Black, similar to RAL9005
- Customized finishes available on request

Variants:

Code	Description
DC200A	DC200A R&P DOOR CLOSER SIZE 2-4 BC WITH ARM & PA BRACKET SILVER
DC200A/SS	DC200A R&P DOOR CLOSER SIZE 2-4 BC WITH ARM & PA BRACKET SS
DC200-2	DC200-2 R&P DOOR CLOSER SIZE 2-4 BC WITH ARM
DC200-2/SS	DC200-2 R&P DOOR CLOSER SIZE 2-4 BC WITH ARM COVER ST/STEEL
DC200	R&P DOOR CLOSER SIZE 2-4 BC BODY ONLY
DC200A/TRIM	DC200A SPARE TRIM PLATE SILVER
DC200/CV/SS	DC200 DOOR CLOSER COVER ONLY SS

Rack & Pinion Door Closers

DC300

Rack & Pinion Door Closer

Application:

ASSA ABLOY Door Closers are ideal for almost any structural conditions, whether they are used in public, residential or commercial buildings or on light or heavy doors.



Specification:

- Rack and pinion tandem door closer with link arm L190
- Certified in compliance with EN 1154, size 3-6
- Suitable for fire and smoke protection doors
- For single action doors up to 1400 mm wide
- DC300A supplied complete with A154 parallel arm bracket (also available as an accessory)
- Can be used with integrated concealed mounting plate, suitable for fire and smoke protection doors
- Can be used for left and right-handed doors
- Link arm height-adjustable up to 14mm
- Closing speed, latching speed and backcheck adjustable via front facing regulating valves
- Thermodynamic valves for consistent performance
- Variable adjustable closing force
- Opening angle up to 180°
- Effective backcheck and latching speed range adjustable
- Large range of applications

Standards:

- Certified in compliance with EN 1154, size 3-6
- CE Marked
- Suitable for fire and smoke protection doors
- Meets BS8300

Finish:

- Silver EV1

Variants:

Code	Description
DC300	DC300 R&P DOOR CLOSER SIZE 3-6 MECHANISM ONLY SILVER
DC300/CV/SS	DC300 DOOR CLOSER COVER ONLY SS
DC300A	DC300A R&P DOOR CLOSER SIZE 3-6 BC WITH ARM & BRACKET SILVER
DC300A/SS	DC300A R&P DOOR CLOSER SIZE 3-6 BC WITH ARM & BRACKET SS
DC300A+DA	DC300A+DELAYED ACTION R&P DOOR CLOSER SIZE 3-6 BC WITH ARM & PA BRACKET
DC300A/TANDEM	DC300A/TANDEM R&P DOOR CLOSERS SIZE 3-6 BC ARMS & BRKTS SIL

Rack & Pinion Door Closers

DC340

Rack & Pinion Door Closer

ASSA ABLOY

Application:

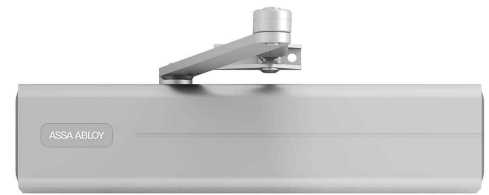
ASSA ABLOY Door Closers are ideal for almost any structural conditions, whether they are used in public, residential or commercial buildings or on light or heavy doors.

Specification:

- Rack and pinion closer with link arm L190
- Certified in compliance with EN 1154, size 3-6
- Suitable for fire and smoke protection doors
- For single action doors up to 1400 mm wide
- Can be used with integrated concealed mounting plate, suitable for fire and smoke protection doors
- Can be used for left and right-handed doors
- Link arm height-adjustable up to 14mm
- Closing speed, latching speed and backcheck adjustable via front facing regulating valves
- Thermodynamic valves for consistent performance
- Variable adjustable closing force
- Opening angle up to 180°
- Effective backcheck and latching speed range adjustable
- Large range of applications

Finish:

- Silver EV1/Silver EV1
- White, similar to RAL9016
- Brown, similar to RAL8014
- Black, similar to RAL9005
- Customized finishes available on request



Standards:

- Certified in compliance with EN 1154, size 2-6 (link arm) or size 2-4 (guide rail)
- CE Marked
- Suitable for fire and smoke protection doors

DC340

Rack & Pinion Door Closer

Variants:

Code	Description
DC340	DC340 R&P DOOR CLOSER SIZE 2-6 (SIZE 1-4 WITH GUIDE RAIL) BC MECHANISM ONLY
DC340/SS	DC340 R&P DOOR CLOSER SIZE 2-6 (SIZE 1-4 WITH GUIDE RAIL)BC MECHANISM & COVER ONLY
DC340DA	DC340+DELAYED ACTION R&P DOOR CLOSER SIZE 2-6 MECHANISM ONLY SILVER
DC340+DA/SS	DC340+DA R&P DOOR CLOSER SIZE 2-6 BC MECHANISM ONLY & SS COVER
DC340A	DC340A R&P DOOR CLOSER SIZE 2-6 BC WITH ARM & BRACKET SILVER
DC340A/SS	DC340A/SS DOOR CLOSER SIZE 2-6 BC WITH ARM & BRACKET & SS COVER
DC340A+DA	DC340A+DELAYED ACTION R&P DOOR CLOSER SIZE 2-6 BC WITH ARM & PA BRACKET
DC340A+DA/SS	DC340A+DELAYED ACTION R&P DOOR CLOSER SIZE 2-6 BC WITH ARM & PA BRACKET
DC340A+DA SS	DRCLSR MECH R&P ADJ 2-6 BC + DA SS
DC340SS	DC340 STANDARD CLOSER 1-4 (2-6) SS
DC340TE/SS	DC340TE R&P CLOSER SIZE 2-6 G460 EL/MECH H/O RAIL SS

Rack & Pinion Door Closers

DC347

Heavy Duty Rack & Pinion Door Closer

Application:

ASSA ABLOY Door Closers are ideal for almost any structural conditions, whether they are used in public, residential or commercial buildings or on light or heavy doors.



Specification:

- Rack and pinion closer with link arm L190
- Certified in compliance with EN 1154, size 3-6
- Suitable for fire and smoke protection doors
- For single action doors up to 1400 mm wide
- Can be used with integrated concealed mounting plate, suitable for fire and smoke protection doors
- Can be used for left and right-handed doors
- Link arm height-adjustable up to 14mm
- Closing speed, latching speed and backcheck adjustable via front facing regulating valves
- Thermodynamic valves for consistent performance
- Variable adjustable closing force
- Opening angle up to 180°
- Effective backcheck and latching speed range adjustable
- Large range of applications

Standards:

- Certified in compliance with EN 1154, size 5-7
- CE Marked
- Suitable for fire and smoke protection doors

Finish:

- Silver EV1Silver EV1
- White, similar to RAL9016
- Brown, similar to RAL8014
- Black, similar to RAL9005
- Customized finishes available on request

Variants:

Code	Description
DC347	DC347 R&P DOOR CLOSER SIZE 5-7 BC MECHANISM ONLY SILVER
DC347A	DC347A R&P DOOR CLOSER SIZE 5-7 BC WITH ARM & PA BRACKET SILVER

Rack & Pinion Door Closers

ACCRP

Accessories

ASSA ABLOY





Application:

ASSA ABLOY Door Closers are ideal for almost any structural conditions, whether they are used in public, residential or commercial buildings or on light or heavy doors.



Specification:

- Door closer with CAM-Motion Technology and height-adjustable guide rail G195 or standard guide rail G193
- Fulfills barrier-free building requirements (DDA/CEN TR 15894)
- Certified compliance with EN 1154, size 1-4
- Suitable for fire and smoke protection doors
- For single action doors up to 1100 mm wide
- Can be used in four installation types: hinge and non-hinge sides in standard and frame installation
- Can be used with integrated concealed mounting plate, suitable for fire and smoke protection doors
- Can be used for left and right-handed doors
- Axis continuously height adjustable up to 14 mm
- Closing speed, latching speed and backcheck adjustable via front facing regulating valves
- Thermodynamic valves for consistent performance
- Variable adjustable closing force
- Opening angle up to 170°
- Effective backcheck and latching speed range adjustable
- Large range of applications

Standards:

- Certified in compliance with EN 1154, size 1-4
- CE Marked
- Suitable for fire and smoke protection doors
- Meets BS8300

Finish:

- Silver EV1
- White, similar to RAL9016
- Brown, similar to RAL8014
- Black, similar to RAL9005
- Customized finishes available on request

Variants:

Code	Description
DC500SS	DC500 CAM MOTION EN 1-4 SS
DC500	DC500 CAM-MOTION DOOR CLOSER SIZE 1-4 BC MECHANISM ONLY SILVER
DC500/SS	DC500 CAM-MOTION DOOR CLOSER SIZE 1-4 BC MECHANISM & SS COVER ONLY
DC500A	DC500A CAM-MOTION DOOR CLOSER SIZE 1-4 WITH HEIGHT ADJUSTABLE G195
DC500A/SS	DC500A/SS CAM-MOTION DOOR CLOSER SIZE 1-4 BC WITH GUIDE RAIL & SS COVER

Application:

A flagship amongst door closers, the ASSA ABLOY DC700 series brings precise control for doors that have to balance access and protection - contained within a stylish exterior to meet the demands of the most discerning environment.



Specification:

- Door closer with CAM-Motion Technology and height-adjustable guide rail G195 or standard guide rail G193
- Fulfils barrier-free building requirements (DDA/CEN TR 15894)
- Certified compliance with EN 1154, size 3-6
- Suitable for fire and smoke protection doors
- For single action doors up to 1400 mm wide. Can be used with integrated concealed mounting plate, suitable for fire and smoke protection doors
- Can be used for left and right-handed doors
- Axis continuously height adjustable up to 14 mm
- Closing speed, latching speed and backcheck adjustable via front facing regulating valves
- Thermodynamic valves for consistent performance
- Variable adjustable closing force
- Opening angle up to 170°
- Effective backcheck and latching speed range adjustable
- Large range of applications

Standards:

- Certified in compliance with EN 1154, size 3-6
- CE Marked
- Suitable for fire and smoke protection doors
- Meets BS8300

Finish:

- Silver EV1
- White, similar to RAL9016
- Brown, similar to RAL8014
- Black, similar to RAL9005
- Customized finishes available on request

Variants:

Code	Description
DC700	DC700 CAM-MOTION DOOR CLOSER SIZE 3-6 BC MECHANISM ONLY SILVER
DC700/SS	DC700 CAM-MOTION DOOR CLOSER SIZE 3-6 BC MECHANISM & SS COVER ONLY
DC700+DA/SS	DC700+DELAYED ACTION CAM-MOTION DOOR CLOSER SIZE 3-6 BC MECHANISM & COVER
DC700A	DC700A CAM-MOTION DOOR CLOSER SIZE 3-6 BC WITH G195 HEIGHT ADJUSTABLE GUIDE RAIL
DC700A/SS	DC700A/SS CAM-MOTION DOOR CLOSER SIZE 3-6 BC WITH GUIDE RAIL & SS COVER

Cam-Motion® Door Closers

DC840

Concealed Cam-Motion® Door Closer

ASSA ABLOY

Application:

ASSA ABLOY Door Closers are ideal for almost any structural conditions, whether they are used in public, residential or commercial buildings or on light or heavy doors.

Specification:

- Concealed door closer with Cam-Motion technology and small standard concealed guide rail G892 or standard concealed guide rail G893
- Fullfills barrier-free building requirements (DDA/CEN PR 15894)
- Certified in compliance with EN 1154, size 1-4
- Suitable for fire and smoke protection doors
- For single action doors up to 1100 mm wide
- Can be used for left and right-handed doors
- Closing speed and latching speed adjustable from top via regulating valves
- Built-in backcheck
- Thermodynamic valves for consistent performance
- Opening angle up to 120°
- Large range of applications
- Versions with 4 mm and 8 mm spindle extensions

Finish:

- Silver EV1
- Customized finishes available on request

Variants:

Code	Description
DC840	DC840 CONCEALED CAM-MOTION DOOR CLOSER SIZE 1-4 BC MECHANISM ONLY
DC840A	DC840A CONCEALED CAM-MOTION DOOR CLOSER SIZE 1-4 BC WITH 20MM G892



Standards:

- Certified in compliance with EN 1154, size 1-4
- CE Marked
- Suitable for fire and smoke protection doors
- Meets BS8300

Cam-Motion® Door Closers

DC860

Concealed Cam-Motion® Door Closer

ASSA ABLOY

Application:

ASSA ABLOY Door Closers are ideal for almost any structural conditions, whether they are used in public, residential or commercial buildings or on light or heavy doors.



Specification:

- Concealed door closer with Cam-Motion technology and small standard concealed guide rail G893
- Fullfills barrier-free building requirements (DDA/CEN PR 15894)
- Certified in compliance with EN 1154, size 1-5
- Suitable for fire and smoke protection doors
- For single action doors up to 1250 mm wide
- Can be used for left and right-handed doors
- Closing speed and latching speed adjustable from top via regulating valves
- Built-in backcheck
- Thermodynamic valves for consistent performance
- Opening angle up to 120°
- Large range of applications
- Versions with 4 mm and 8 mm spindle extensions

Standards:

- Certified in compliance with EN 1154, size 1-5
- CE Marked
- Suitable for fire and smoke protection doors
- Meets BS8300

Finish:

- Silver EV1
- Customized finishes available on request

Variants:

Code	Description
DC860	DC860
DC860A	DC860A

DC500 with G460

Electro-mechanical Door Closer

Application:

ASSA ABLOY Door Closers are ideal for almost any structural conditions, whether they are used in public, residential or commercial buildings or on light or heavy doors

Standards:

- Certified in compliance with EN1154/EN1155, size 1-4

Specification:

Door closer with Cam-Motion® technology and guide rail with electro-mechanical hold-open device for single leaf doors

- Hold-open angle continuously adjustable between 70°-130°
- Suitable for fire and smoke protection doors up to 1400 mm wide Electro-mechanical hold-open device
- Continuously adjustable holding force
- Hold-open angle adjustable between 70°-130°
- Door opening angle up to 130°
- Can be used for left and right handed doors
- Standard mounting position on hinge side and non-hinge side
- Axis continuously height adjustable up to 14 mm
- Large range of applications
-

Finish:

- Standard colours: silver EV1; white, similar to RAL9016; brown, similar to RAL8014; black, similar to RAL9005, stainless steel
- Customised finishes available on request

Electro-mechanical Door Closers

ASSA ABLOY
Opening Solutions



Electro-mechanical Door Closers

DC340TE

Electro-mechanical Door Closer

Application:

ASSA ABLOY Door Closers are ideal for almost any structural conditions, whether they are used in public, residential or commercial buildings or on light or heavy doors.

DC300G-HF

Electro-mechanical Door Closer

Application:

The DC300G-HF is the ultimate hold-open, free-swing door closer for changing door use.

It offers unique flexibility, unrivalled performance and full certification that no other door closer can match:

- Changes between hold-open and free-swing modes on site, in seconds
- Uniquely offers variable power 3-6, retains low opening forces on larger doors
- Full, unrivalled certification in all modes and configurations



Specification:

- High efficiency rack and pinion, electro-mechanical door closer with standard, hold-open and free-swing modes
- Uniquely adjustable power size EN 3-6. Suitable for door widths up to 1400 mm (size 6, 120 kg)
- Soft-motion release closing from 130-75° helps prevent damage to doors set and injury to users, extending the door closer and door set life span.
- Hold-open active between 75-130°
- Holding force greater than 120Nm
- Junction box non-polarity sensitive
- Unhanded
- Same fixing points as other ASSA ABLOY door closers
- 14mm height adjustment
- Tamper proof arm
- Available in silver and stainless steel cover finishes

Standards:

- CE Marked to EN 1154 and EN 1155 in all three modes and fitting configurations

3	8	6 3	1	1	3
---	---	--------	---	---	---

- Suitable for fire and smoke controlled doors
- BS 8300 compliant in standard, hold-open and free-swing modes
- 10 year mechanical warranty
- 2 year electrical warranty

Finish:

Standard colours:

- Silver EV1
- Stainless steel

Electro-mechanical Door Closers

DC640 A&T

Electro-mechanical Door Closer

DC500 with G460

Electro-mechanical Door Closer

Application:

ASSA ABLOY Door Closers are ideal for almost any structural conditions, whether they are used in public, residential or commercial buildings or on light or heavy doors.

Specification:

- Door closer with CAM-Motion Technology.
- G460 single fire door system. Guide rail with hold open unit.
- Fulfills barrier-free building requirements (ADM & BS8300).
- Certified compliance with EN 1154, size 1-4.
- Suitable for fire and smoke protection doors
- For single action doors up to 1100 mm wide
- Can be used in four installation types: hinge and non-hinge sides in standard and frame installation
- Can be used with integrated concealed mounting plate, suitable for fire and smoke protection doors
- Can be used for left and right-handed doors
- Axis continuously height adjustable up to 14 mm
- Closing speed, latching speed and backcheck adjustable via front facing regulating valves
- Thermodynamic valves for consistent performance
- Variable adjustable closing force
- Opening angle up to 170°
- Effective backcheck and latching speed range adjustable
- Large range of applications

Finish:

- Silver EV1
- White, similar to RAL9016
- Brown, similar to RAL8014
- Black, similar to RAL9005
- Customized finishes available on request

Standards:

- Certified in compliance with EN 1154, size 1-4
- CE Marked
- Suitable for fire and smoke protection doors
- Meets BS8300

DC500 with G461

Electro-mechanical Door Closer

Application:

ASSA ABLOY Door Closers are ideal for almost any structural conditions, whether they are used in public, residential or commercial buildings or on light or heavy doors.

Specification:

- Door closer with CAM-Motion Technology.
- G461 double fire door system. Coordinating guide rail.
- Fulfills barrier-free building requirements (ADM & BS8300).
- Certified compliance with EN 1154, size 1-4
- Suitable for fire and smoke protection doors
- For single action doors up to 1100 mm wide
- Can be used in four installation types: hinge and non-hinge sides in standard and frame installation
- Can be used with integrated concealed mounting plate, suitable for fire and smoke protection doors
- Can be used for left and right-handed doors
- Axis continuously height adjustable up to 14 mm
- Closing speed, latching speed and backcheck adjustable via front facing regulating valves
- Thermodynamic valves for consistent performance
- Variable adjustable closing force
- Opening angle up to 170°
- Effective backcheck and latching speed range adjustable
- Large range of applications

Finish:

- Silver EV1
- Satin stainless steel
- White, similar to RAL9016
- Brown, similar to RAL8014
- Black, similar to RAL9005
- Customized finishes available on request

Standards:

- Certified in compliance with EN 1154, size 1-4
- CE Marked
- Suitable for fire and smoke protection doors
- Meets BS8300

DC500 with G462

Electro-mechanical Door Closer

Application:

ASSA ABLOY Door Closers are ideal for almost any structural conditions, whether they are used in public, residential or commercial buildings or on light or heavy doors.

Specification:

- Door closer with CAM-Motion Technology.
- G462 double fire door system. Coordinating guide rail with two hold open units.
- Fulfills barrier-free building requirements (ADM & BS8300)
- Certified compliance with EN 1154, size 1-4
- Suitable for fire and smoke protection doors
- For single action doors up to 1100 mm wide
- Can be used in four installation types: hinge and non-hinge sides in standard and frame installation
- Can be used with integrated concealed mounting plate, suitable for fire and smoke protection doors
- Can be used for left and right-handed doors
- Axis continuously height adjustable up to 14 mm
- Closing speed, latching speed and backcheck adjustable via front facing regulating valves
- Thermodynamic valves for consistent performance
- Variable adjustable closing force
- Opening angle up to 170°
- Effective backcheck and latching speed range adjustable
- Large range of applications

Finish:

- Silver EV1
- Satin stainless steel
- White, similar to RAL9016
- Brown, similar to RAL8014
- Black, similar to RAL9005
- Customized finishes available on request

Standards:

- Certified in compliance with EN 1154, size 1-4
- CE Marked
- Suitable for fire and smoke protection doors
- Meets BS8300

DC500 with G464

Electro-mechanical Door Closer

Application:

ASSA ABLOY Door Closers are ideal for almost any structural conditions, whether they are used in public, residential or commercial buildings or on light or heavy doors.

Specification:

- Door closer with CAM-Motion Technology and height-adjustable guide rail G195 or standard guide rail G193
- Fulfills barrier-free building requirements (DDA/CEN TR 15894)
- Certified compliance with EN 1154, size 1-4
- Suitable for fire and smoke protection doors
- For single action doors up to 1100 mm wide
- Can be used in four installation types: hinge and non-hinge sides in standard and frame installation
- Can be used with integrated concealed mounting plate, suitable for fire and smoke protection doors
- Can be used for left and right-handed doors
- Axis continuously height adjustable up to 14 mm
- Closing speed, latching speed and backcheck adjustable via front facing regulating valves
- Thermodynamic valves for consistent performance
- Variable adjustable closing force
- Opening angle up to 170°
- Effective backcheck and latching speed range adjustable
- Large range of applications

Finish:

- Silver EV1
- Satin stainless steel
- White, similar to RAL9016
- Brown, similar to RAL8014
- Black, similar to RAL9005
- Customized finishes available on request

Standards:

- Certified in compliance with EN 1154, size 2-4
- CE Marked
- Suitable for fire and smoke protection doors
- Meets BS8300

DC700 with G460

Electro-mechanical Door Closer

Application:

A flagship amongst door closers, the ASSA ABLOY DC700 series brings precise control for doors that have to balance access and protection - contained within a stylish exterior to meet the demands of the most discerning environment.

Specification:

- Door closer with CAM-Motion Technology.
- G464 double fire door system. Coordinating guide rail with one hold open unit.
- Fulfills barrier-free building requirements (ADM & BS8300)
- Certified compliance with EN 1154, size 3-6
- Suitable for fire and smoke protection doors
- For single action doors up to 1400 mm wide. Can be used with integrated concealed mounting plate, suitable for fire and smoke protection doors
- Can be used for left and right-handed doors
- Axis continuously height adjustable up to 14 mm
- Closing speed, latching speed and backcheck adjustable via front facing regulating valves
- Thermodynamic valves for consistent performance
- Variable adjustable closing force
- Opening angle up to 170°
- Effective backcheck and latching speed range adjustable
- Large range of applications

Finish:

- Silver EV1
- Satin stainless steel
- White, similar to RAL9016
- Brown, similar to RAL8014
- Black, similar to RAL9005
- Customized finishes available on request

Standards:

- Certified in compliance with EN 1154, size 3-6
- CE Marked
- Suitable for fire and smoke protection doors
- Meets BS8300

DC700 with G461

Electro-mechanical Door Closer

Application:

A flagship amongst door closers, the ASSA ABLOY DC700 series brings precise control for doors that have to balance access and protection - contained within a stylish exterior to meet the demands of the most discerning environment.

Specification:

- Door closer with CAM-Motion Technology.
- G461 double fire door system. Coordinating guide rail
- Fulfills barrier-free building requirements (ADM & BS8300).
- Certified compliance with EN 1154, size 3-6
- Suitable for fire and smoke protection doors
- For single action doors up to 1400 mm wide. Can be used with integrated concealed mounting plate, suitable for fire and smoke protection doors
- Can be used for left and right-handed doors
- Axis continuously height adjustable up to 14 mm
- Closing speed, latching speed and backcheck adjustable via front facing regulating valves
- Thermodynamic valves for consistent performance
- Variable adjustable closing force
- Opening angle up to 170°
- Effective backcheck and latching speed range adjustable
- Large range of applications

Finish:

- Silver EV1
- Satin stainless steel
- White, similar to RAL9016
- Brown, similar to RAL8014
- Black, similar to RAL9005
- Customized finishes available on request

Standards:

- Certified in compliance with EN 1154, size 3-6
- CE Marked
- Suitable for fire and smoke protection doors
- Meets BS8300

DC700 with G462

Electro-mechanical Door Closer

Application:

A flagship amongst door closers, the ASSA ABLOY DC700 series brings precise control for doors that have to balance access and protection - contained within a stylish exterior to meet the demands of the most discerning environment.

Specification:

- Door closer with CAM-Motion Technology.
- G462 double fire door system. Coordinating guide rail with two hold open units.
- Fulfills barrier-free building requirements (ADM & BS8300)
- Certified compliance with EN 1154, size 3-6
- Suitable for fire and smoke protection doors
- For single action doors up to 1400 mm wide. Can be used with integrated concealed mounting plate, suitable for fire and smoke protection doors
- Can be used for left and right-handed doors
- Axis continuously height adjustable up to 14 mm
- Closing speed, latching speed and backcheck adjustable via front facing regulating valves
- Thermodynamic valves for consistent performance
- Variable adjustable closing force
- Opening angle up to 170°
- Effective backcheck and latching speed range adjustable
- Large range of applications

Finish:

- Silver EV1
- Satin stainless steel
- White, similar to RAL9016
- Brown, similar to RAL8014
- Black, similar to RAL9005
- Customized finishes available on request

Standards:

- Certified in compliance with EN 1154, size 3-6
- CE Marked
- Suitable for fire and smoke protection doors
- Meets BS8300

DC700 with G464

Electro-mechanical Door Closer

Application:

A flagship amongst door closers, the ASSA ABLOY DC700 series brings precise control for doors that have to balance access and protection - contained within a stylish exterior to meet the demands of the most discerning environment.

Specification:

- Door closer with CAM-Motion Technology
- G464 double fire door system. Coordinating guide rail with one hold open unit.
- Fulfills barrier-free building requirements (ADM & BS8300).
- Certified compliance with EN 1154, size 3-6
- Suitable for fire and smoke protection doors
- For single action doors up to 1400 mm wide. Can be used with integrated concealed mounting plate, suitable for fire and smoke protection doors
- Can be used for left and right-handed doors
- Axis continuously height adjustable up to 14 mm
- Closing speed, latching speed and backcheck adjustable via front facing regulating valves
- Thermodynamic valves for consistent performance
- Variable adjustable closing force
- Opening angle up to 170°
- Effective backcheck and latching speed range adjustable
- Large range of applications

Finish:

- Silver EV1
- Satin stainless steel
- White, similar to RAL9016
- Brown, similar to RAL8014
- Black, similar to RAL9005
- Customized finishes available on request

Standards:

- Certified in compliance with EN 1154, size 3-6
- CE Marked
- Suitable for fire and smoke protection doors
- Meets BS8300

DC840 with G880

Concealed Electro-mechanical Door Closer

Application:

ASSA ABLOY Door Closers are ideal for almost any structural conditions, whether they are used in public, residential or commercial buildings or on light or heavy doors.

Specification:

- Concealed door closer with Cam-Motion technology and small standard concealed guide rail G892 or standard concealed guide rail G893
- Fullfills barrier-free building requirements (DDA/CEN PR 15894)
- Certified in compliance with EN 1154, size 1-4
- Suitable for fire and smoke protection doors
- For single action doors up to 1100 mm wide
- Can be used for left and right-handed doors
- Closing speed and latching speed adjustable from top via regulating valves
- Built-in backcheck
- Thermodynamic valves for consistent performance
- Opening angle up to 120°
- Large range of applications
- Versions with 4 mm and 8 mm spindle extensions

Standards:

- Certified in compliance with EN 1154, size 2-4
- CE Marked
- Suitable for fire and smoke protection doors
- Meets BS8300

Finish:

- Silver EV1
- Customized finishes available on request

DC860 with G880

Concealed Electro-mechanical Door Closer

Application:

ASSA ABLOY Door Closers are ideal for almost any structural conditions, whether they are used in public, residential or commercial buildings or on light or heavy doors.

Specification:

- Concealed door closer with Cam-Motion technology and small standard concealed guide rail G893
- Fullfills barrier-free building requirements (DDA/CEN PR 15894)
- Certified in compliance with EN 1154, size 1-5
- Suitable for fire and smoke protection doors
- For single action doors up to 1250 mm wide
- Can be used for left and right-handed doors
- Closing speed and latching speed adjustable from top via regulating valves
- Built-in backcheck
- Thermodynamic valves for consistent performance
- Opening angle up to 120°
- Large range of applications
- Versions with 4 mm and 8 mm spindle extensions

Finish:

- Silver EV1
- Customized finishes available on request

Standards:

- Certified in compliance with EN 1154, size 2-4
- CE Marked
- Suitable for fire and smoke protection doors
- Meets BS8300

DC860 with G881

Concealed Electro-mechanical Door Closer

Application:

ASSA ABLOY Door Closers are ideal for almost any structural conditions, whether they are used in public, residential or commercial buildings or on light or heavy doors.

Specification:

- Concealed door closer with Cam-Motion technology and small standard concealed guide rail G893
- Fullfills barrier-free building requirements (DDA/CEN PR 15894)
- Certified in compliance with EN 1154, size 1-5
- Suitable for fire and smoke protection doors
- For single action doors up to 1250 mm wide
- Can be used for left and right-handed doors
- Closing speed and latching speed adjustable from top via regulating valves
- Built-in backcheck
- Thermodynamic valves for consistent performance
- Opening angle up to 120°
- Large range of applications
- Versions with 4 mm and 8 mm spindle extensions

Finish:

- Silver EV1
- Customized finishes available on request

Standards:

- Certified in compliance with EN 1154, size 2-4
- CE Marked
- Suitable for fire and smoke protection doors
- Meets BS8300

DC860 with G882

Concealed Electro-mechanical Door Closer

Application:

ASSA ABLOY Door Closers are ideal for almost any structural conditions, whether they are used in public, residential or commercial buildings or on light or heavy doors.

Specification:

- Concealed door closer with Cam-Motion technology and small standard concealed guide rail G893
- Fullfills barrier-free building requirements (DDA/CEN PR 15894)
- Certified in compliance with EN 1154, size 1-5
- Suitable for fire and smoke protection doors
- For single action doors up to 1250 mm wide
- Can be used for left and right-handed doors
- Closing speed and latching speed adjustable from top via regulating valves
- Built-in backcheck
- Thermodynamic valves for consistent performance
- Opening angle up to 120°
- Large range of applications
- Versions with 4 mm and 8 mm spindle extensions

Standards:

- Certified in compliance with EN 1154, size 2-4
- CE Marked
- Suitable for fire and smoke protection doors
- Meets BS8300

Finish:

- Silver EV1
- Customized finishes available on request

DC860 with G884

Concealed Electro-mechanical Door Closer

Application:

ASSA ABLOY Door Closers are ideal for almost any structural conditions, whether they are used in public, residential or commercial buildings or on light or heavy doors.

Specification:

- Concealed door closer with Cam-Motion technology and small standard concealed guide rail G893
- Fullfills barrier-free building requirements (DDA/CEN PR 15894)
- Certified in compliance with EN 1154, size 1-5
- Suitable for fire and smoke protection doors
- For single action doors up to 1250 mm wide
- Can be used for left and right-handed doors
- Closing speed and latching speed adjustable from top via regulating valves
- Built-in backcheck
- Thermodynamic valves for consistent performance
- Opening angle up to 120°
- Large range of applications
- Versions with 4 mm and 8 mm spindle extensions

Finish:

- Silver EV1
- Customized finishes available on request

Standards:

- Certified in compliance with EN 1154, size 2-4
- CE Marked
- Suitable for fire and smoke protection doors
- Meets BS8300

Specialist Door Closers

ASSA ABLOY
Opening Solutions



DA4400F

The model series DA4400 revolving door drive meets the requirements for single-leaf or double-leaf doors, fire doors and emergency exit doors.

Suitable for power assist, low / full energy or push-and-go applications - the integrated control offers all the required functions and can be easily set on the device or via a laptop monitor. You do not have to specify which functions are required during planning, they can still be activated after commissioning the system.

DA4400F

DA4405F

DA4405F

Application:

The model series DA4405F revolving door drive meets the requirements for single-leaf or double-leaf fire doors and emergency exit doors. Suitable for power assist, low / full energy or push-and-go applications - the integrated control offers all the required functions and can be easily set on the device or via a laptop monitor.

You do not have to specify which functions are required during planning, they can still be activated after commissioning the system. Accessories such as sensor, radar, smoke detector, lock, door opener or access control can be easily connected to the controller.

Upgrading or retrofitting the controller is not necessary, everything is already integrated for ease of installation.

Specification:

Suitable for use on interior and exterior doors being used for:

- Public buildings (stations / airports)
- Educational institutions (Schools, universities, day centers)
- Hospitals / retirement homes
- Shopping centers
- Administration building
- Recreational facilities



Standards:

Examinations and approvals:

CE: Yes

DIBt approval: Yes

Application:

The model series DA4410F revolving door drive meets the requirements for single-leaf or double-leaf fire doors and emergency exit doors. Suitable for power assist, low / full energy or push-and-go applications - the integrated control offers all the required functions and can be easily set on the device or via a laptop monitor.

You do not have to specify which functions are required during planning, they can still be activated after commissioning the system. Accessories such as sensor, radar, smoke detector, lock, door opener or access control can be easily connected to the controller.

Upgrading or retrofitting the controller is not necessary, everything is already integrated for ease of installation.

Specification:

Suitable for use on interior and exterior doors being used for:

- Public buildings (stations / airports)
- Educational institutions (Schools, universities, day centers)
- Hospitals / retirement homes
- Shopping centers
- Administration building
- Recreational facilities



Standards:

Examinations and approvals:

CE: Yes

DIBt approval: Yes



Floor Springs

DC450A

Floor Springs

ASSA ABLOY

Application:

ASSA ABLOY branded Floor Spring with closing force EN4 meaning suitable for use on doors with a maximum weight of 80kg and 1100mm wide. Non Hold Open variants are ideal for use on fire doors while the Hold Open units are suitable for non fire doors. While the units can be ordered complete with a stainless steel cover, all other accessories such as spindles are sold separately.



Variants:

Code	Description
DC450A	DC450A floor spring EN4 hold open 105deg c/w st steel cover
DC450A/NHO	DC450A floor spring EN4 non hold open c/w st steel cover
DC450	DC450 mech only floor spring EN4 hold open 105 deg
DC450/NHO	DC450/NHO mech only floor spring non hold open

Floor Springs

DC475

Floor Springs

ASSA ABLOY

Application:

ASSA ABLOY branded Floor Spring with closing force EN3-6 meaning suitable for use on doors with a maximum weight of 120kg and 1400mm wide. Non Hold Open variants are ideal for use on fire doors while the Hold Open units are suitable for non fire doors. While the units can be ordered complete with a stainless steel cover, all other accessories such as spindles are sold separately.



Variants:

Code	Description
DC475A	DC475A floor spring EN3-6 hold open 105deg c/w st steel cover
DC475A/NHO	DC475A floor spring EN3-6 non hold open c/w st steel cover
DC475	DC475 floor spring mech only hold open 105deg
DC475/NHO	DC475 floor spring mech only non hold open

Floor Springs

DC477

Floor Springs

ASSA ABLOY

Application:

ASSA ABLOY branded Floor Spring with closing force EN2-4 meaning suitable for use on doors with a maximum weight of 80kg and 1100mm wide. Non Hold Open variants are ideal for use on fire doors (when adjusted to give a size 3 closing force) while the Hold Open units are suitable for non fire doors. While the units can be ordered complete with a stainless steel cover, all other accessories such as spindles are sold separately.



Variants:

Code	Description
DC477A	DC477A floor spring EN2-4 hold open 105deg c/w st steel cover
DC477A/NHO	DC477A/NHO floor spring EN2-4 non hold open c/w st steel cover
DC477	DC477 floor spring mech only hold open 105deg
DC477/NHO	DC477 floor spring mech only non hold open

Door Automatics

DA4400F

ASSA ABLOY
Opening Solutions

DA4400F

DA4405F

DA4405F

Application:

The model series DA4405F revolving door drive meets the requirements for single-leaf or double-leaf fire doors and emergency exit doors. Suitable for power assist, low / full energy or push-and-go applications - the integrated control offers all the required functions and can be easily set on the device or via a laptop monitor.

You do not have to specify which functions are required during planning, they can still be activated after commissioning the system. Accessories such as sensor, radar, smoke detector, lock, door opener or access control can be easily connected to the controller.

Upgrading or retrofitting the controller is not necessary, everything is already integrated for ease of installation.

Specification:

Suitable for use on interior and exterior doors being used for:

- Public buildings (stations / airports)
- Educational institutions (Schools, universities, day centers)
- Hospitals / retirement homes
- Shopping centers
- Administration building
- Recreational facilities



Standards:

Examinations and approvals:

CE: Yes

DIBt approval: Yes

Application:

The model series DA4410F revolving door drive meets the requirements for single-leaf or double-leaf fire doors and emergency exit doors. Suitable for power assist, low / full energy or push-and-go applications - the integrated control offers all the required functions and can be easily set on the device or via a laptop monitor.

You do not have to specify which functions are required during planning, they can still be activated after commissioning the system. Accessories such as sensor, radar, smoke detector, lock, door opener or access control can be easily connected to the controller.

Upgrading or retrofitting the controller is not necessary, everything is already integrated for ease of installation.

Specification:

Suitable for use on interior and exterior doors being used for:

- Public buildings (stations / airports)
- Educational institutions (Schools, universities, day centers)
- Hospitals / retirement homes
- Shopping centers
- Administration building
- Recreational facilities



Standards:

Examinations and approvals:

CE: Yes

DIBt approval: Yes